

**APV 2 Effect Plate Evaporator**

**Mfg: APV**

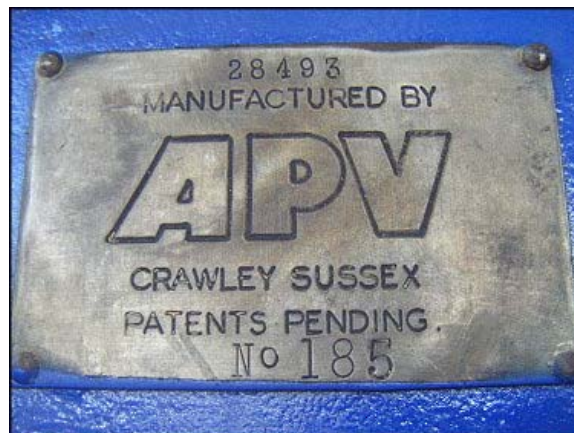
**Mfg: APV**

**Stock No: RAAF112.210**

**Stock No: RAAF112.210**



APV 2-Effect Plate Evaporator. First Effect, Model: 185, S/N: 28493. Number of plates: 60, plate pack Length: 21 ½ in. Approximate effective heat transfer area: 371 sq. ft. Inlets: (1) 1 ½ in. dia. S-line fitting (product), (1) 1 ½ in. dia. port (media), (1) 3 in. dia. port (media), outlets: (1) 21 in. W x 9 in. H discharge. First effect stainless steel separator: 200 gallon approximate capacity, W.O: 10350, working vacuum: 26.5 in., test vacuum: full. Unit has a 1 ft. 6 in. dia. manway. Inlets: (1) 21 in. W x 9 in. H infeed. Outlets: (1) 1 in. dia. FNPT (vacuum), (1) 2 ½ in. dia. port (media), (1) 3 in. dia. S-line fitting, (1) 10 in. dia. flanged port (to 2nd effect).



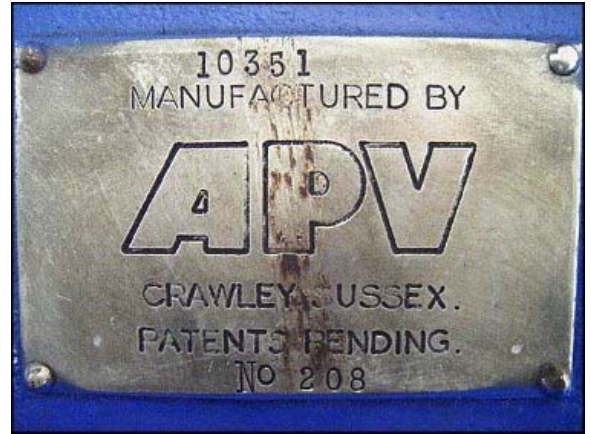


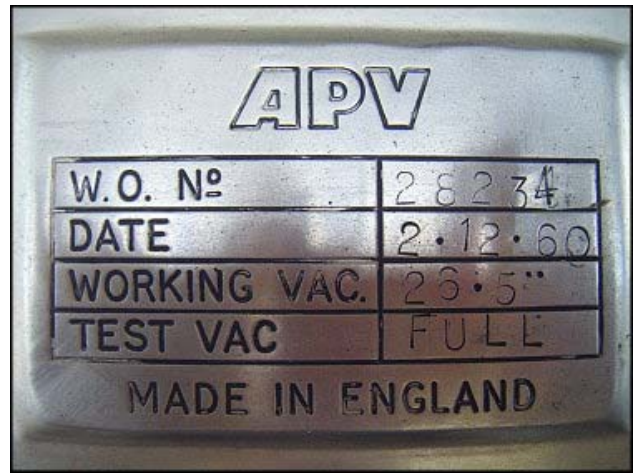
**APV**

W.O. N°	10350
DATE	22 6 51
WORKING VAC.	26.5"
TEST VAC.	FULL

**MADE IN ENGLAND**

Second Effect, Model: 208, S/N: 10351, number of plates: 124, plate pack length: 44 in. Approximate effective heat transfer area: 767 sq. ft. Inlets: (1) 1½ in. dia. port (media), (1) 2-1/2 in. dia. S-line fitting (product), (1) 10 in. dia. flanged port (from 1st effect). Outlets: (1) 21 in. W x 9 in. H discharge. Second effect stainless steel separator: 800 gallon approximate capacity, W.O: 28234, working vacuum: 26.5 in., test vacuum: full. Unit has a 1 ft 6 in dia. manway with sight glass. Inlets: (1) 21 in. W x 9 in. H infeed, outlets: (1) 1 in. dia. FNPT (vacuum), (2) 3 in. dia. S-line fitting (product).





Stainless Steel ParaFlow Heat Exchanger. Type: HX. M/C 2622587. Section 1: number of plates: 49. Heat transfer area: 87 sq. ft. Section 2: number of plates: 19. Heat transfer area: 33 sq. ft. Inlets/Outlets: (6) 2 in. Acme. (2) 1-1/2 in. MNPT. Overall dimensions: 5 ft. 7 in. L. x 1 ft. 3-3/8 in. W. x 5 ft. 3/8 in. H.



Stainless Steel Balance Tank. Capacity: 40 gallons. Square D float switch. Class: 9036. (1) 5-3/4  
Stainless Steel Floater. Inlets/Outlets: (1) 1-3/8 in. FNPT. (1) 1-1/2 in. s-line. (1) 1-5/8 in. MNPT. (1) 3 in.  
s-line. Overall dimensions: 3 ft. 10-1/2 in. L. x 2 ft. 8-3/8 in. W. x 3 ft. 7-7/8 in. H.

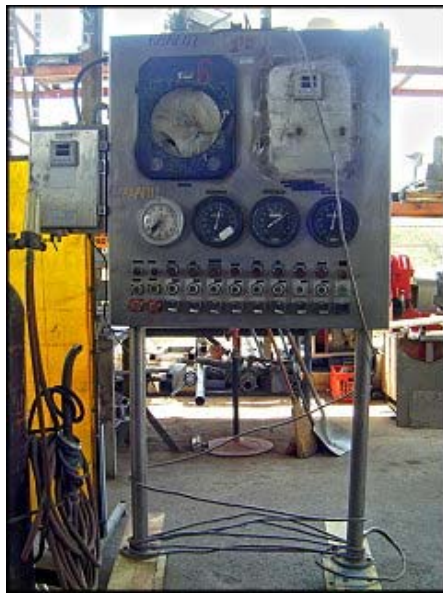


Condenser unit. 190 gallon capacity. Inlets/outlets: (1) 18 in. flange dia. port with (16) 1 in. mounting hole  
dia. Center to center: adjacent: 4-3/8 in. Opposite: 1 ft. 10-5/8 in. (1) 6-1/4 flange dia. port with (8) 1 in.  
mounting hole dia. Center to center: adjacent: 3-5/8 in. Opposite: 9-1/2 in. (1) 3-5/8 in. flange dia. port  
with (4) 3/4 in. mounting hole dia. Center to center: adjacent: 4-1/4 in. Opposite: 6 in. (1) 6 in. port. (1) 1 in.  
port. (1) 1 in. FNPT. (1) 7/8 in. MNPT. (1) 5/8 in. MNPT. Overall dimensions: 5 ft. 4-3/4 in. L. x 3 ft. 5 in.  
W. x 17 ft 1/2 in. H.

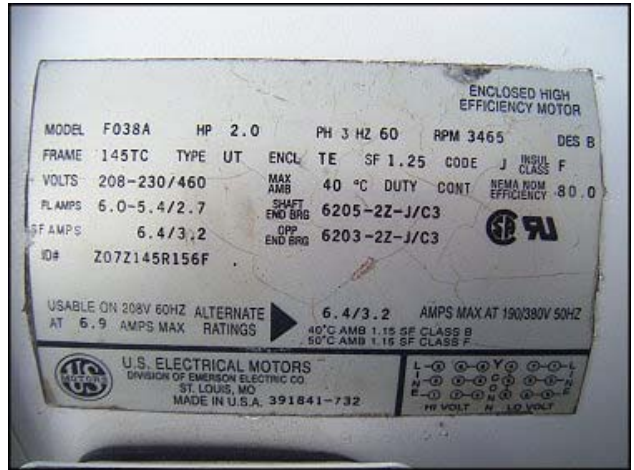




Control Panel with a small Pro Controls Inc. evaporator steam controller. Serial no. 96134. 120 V, 15 A, 1 Phase. Taylor chart recorder, S/N: 122RV168-2617. Chart or scale: OP 534. Primary range (red) 120, 230 degrees F. Overall dimensions: 4 ft. 3-1/2 in. L. x 3 ft. 2-1/8 in. W. x 7 ft. 3 in. H.

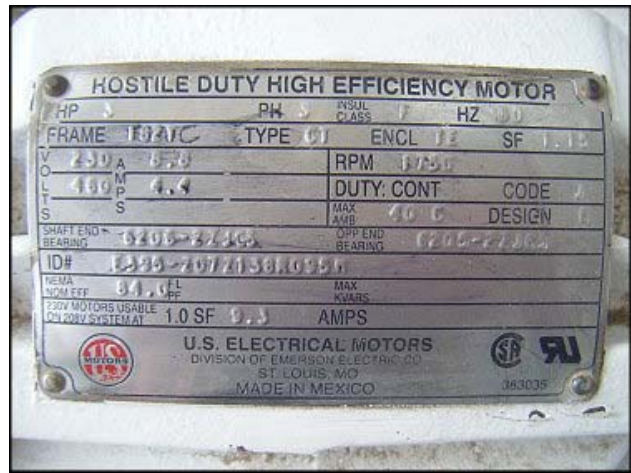


(1) APV Centrifugal Pump. Model no. W20/20. Serial no. P3587-96. U.S. Electrical motor: 2.0 hp, 3465 rpm, 208-230/460 V, 6.4/3.2 A, 60 Hz, 3 phase. Inlets: (1) 2 in. S-line. Outlets: (1) 2 in. S-line. Overall dimensions: 1 ft. 6-1/4 in. L. x 10-1/2 in. W. x 1 ft. 2-1/8 in. H.

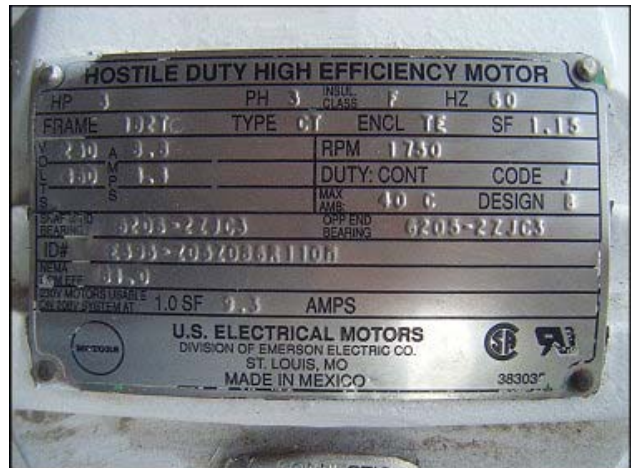
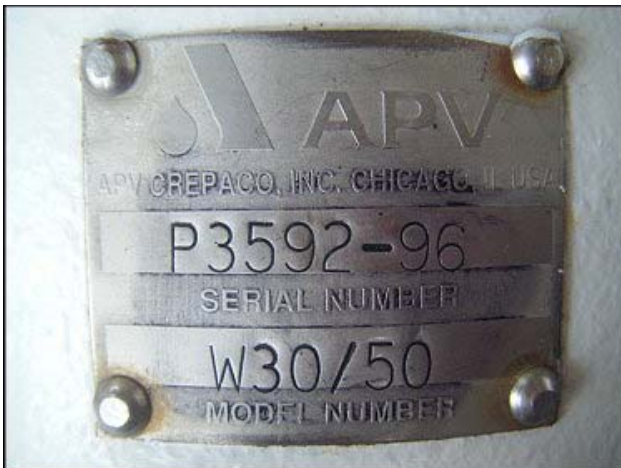


(1) APV Centrifugal Pump. Model no. W30/50. Serial no. P3591-96. U.S. Electrical motor: 3 hp, 1750 rpm, 230/460 V, 8.8/4.4 A, 60 Hz, 3 phase. Inlets: (1) 3 in. S-line. Outlets: (1) 2-1/2 in. S-line. Overall dimensions: 1 ft. 9-3/4 in. L. x 1 ft. 3/4 in. W. x 1 ft. 2-1/8 in. H.

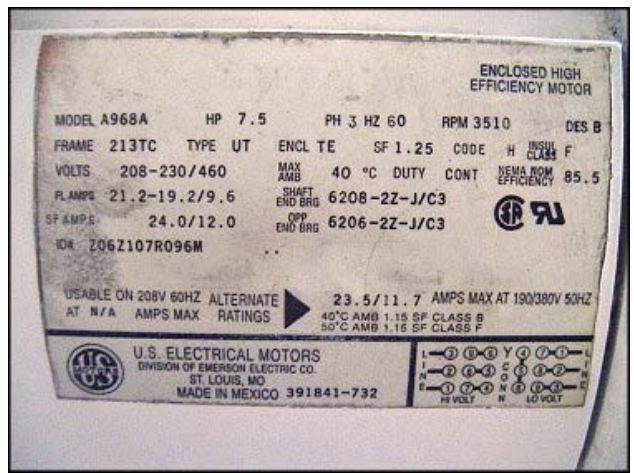




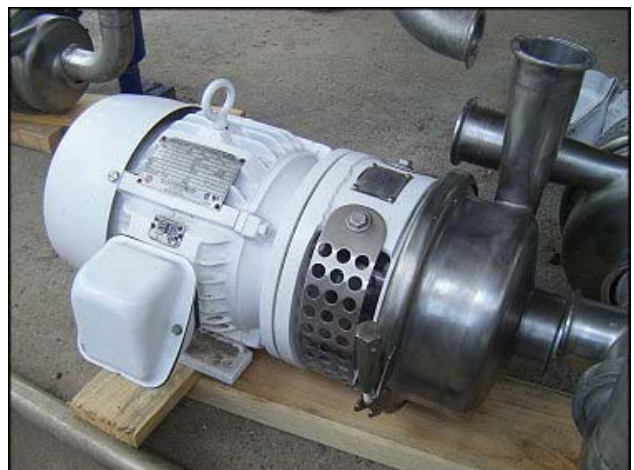
(1) APV Centrifugal Pump. Model no. W30/50. Serial no. P3592-96. U.S. Electrical motor: 3 hp, 1750 rpm, 230/460 V, 8.8/4.4 A, 60 Hz, 3 phase. Inlets: (1) 3 in. S-line. Outlets: (1) 2-1/2 in. S-line. Overall dimensions: 1 ft. 9-1/2 in. L. x 1 ft. 5/8 in. W. x 1 ft. 3-7/8 in. H.

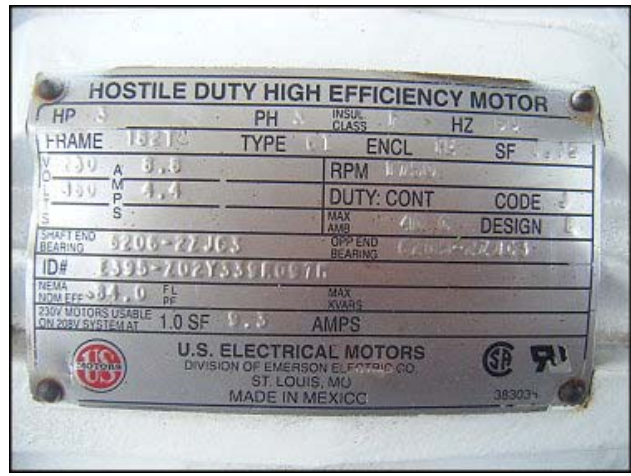


(1) APV Centrifugal pump: Model no. W30/50. Serial no. P3593-96. U.S. Electrical motor: 7.5 hp, 3510 rpm, 208-230/460 V, 24.0/12.0 A, 60 Hz, 3 phase. Inlets: (1) 3 in. S-line. Outlet: (1) 2-1/2 in. S-line. Overall dimensions: 1 ft. 1 in. L. x 1 ft. 2-1/2 in. W. x 1 ft. 2-3/4 in. H.



(1) APV Centrifugal Pump: Model no. W30/50. Serial no. P3590-96. U.S. Electrical motor: 3 hp, 1750 rpm, 230/460 V, 8.8/4.4 A, 60 Hz, 3 phase. Inlets: (1) 3 in. s-line. Outlet: (1) 2-1/2 in. S-line. Overall dimensions: 1 ft. 9-3/8 in. L. x 1 ft. 3/4 in. W. x 1 ft. 2 in. H.



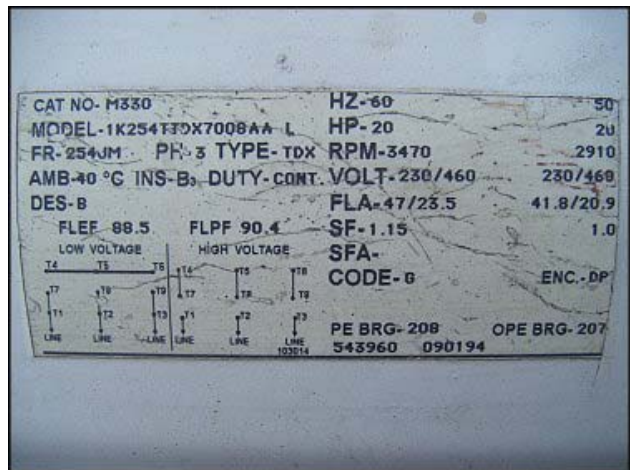


(1) Worthington D-Line® Centrifugal Pump: Model no. D1021. Serial no. Y712643. Size: 1.5X 1X6. MATL: 316 SS. U.S. Electrical motor: 1 hp, 1755, 230/460 V, 3.6/1.9 A, 60 Hz, 3 phase. Inlets: (1) 2-3/4 in. dia. flanged, (4) mounting holes. 2-3/4 in. adjacent. 3-7/8 in. opposite. Outlets: 1 1/2 S-Line. Overall dimensions: 1 ft. 8-3/4 in. L. x 11 in. W. x 1 ft. 1/4 in. H.

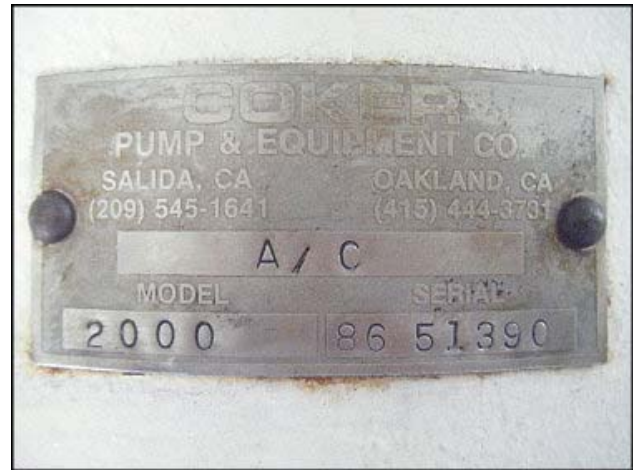




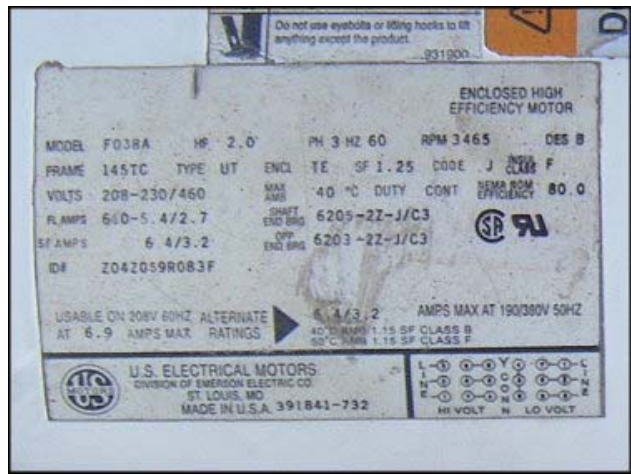
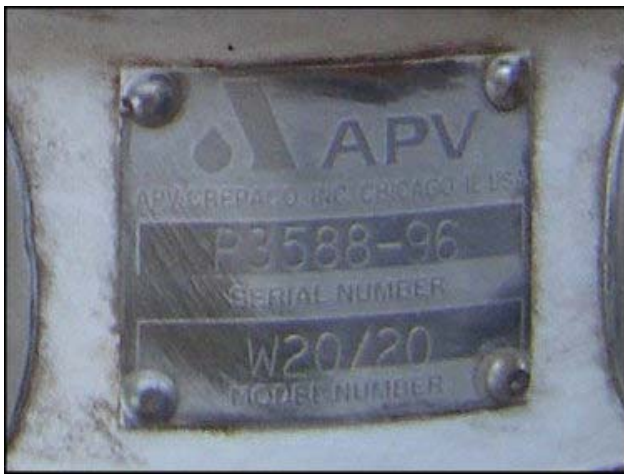
(1) Berkeley Centrifugal Pump. Model no. B3ZPLS. (1) temperature gauge. Motor specifications: 20 hp, 3470 rpm, 230/460 V, 47/23.5 A, 60 Hz, 3 Phase. Inlets/Outlets: (1) 4 in. MNPT. (1) 3 in. FNPT. (1) 1-1/4 in. MNPT. (1) 2 in. shut on/off valve. Overall dimensions: 4 ft. 3-3/4 in. L. x 2 ft. W. 4 ft. 5-5/8 in. H.



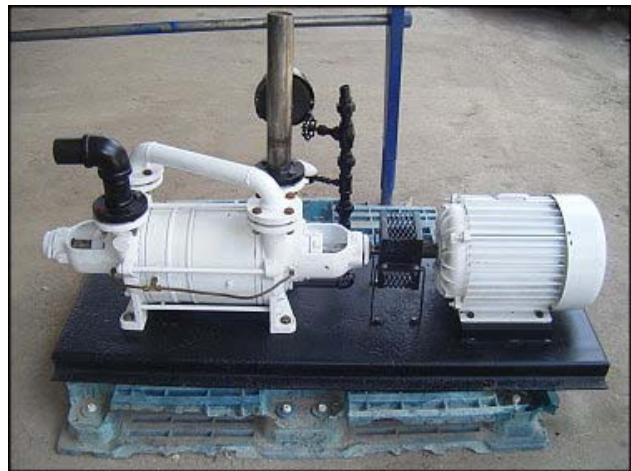
(1) Coker Centrifugal Pump: Model no. 2000. Serial no. 8651390. Leland Faraday Electric Company motor: 20 hp, 1724-1750 rpm, 208-230/460 V, 46/23 A, 60 Hz, 3 phase. Inlets: (1) 5-3/8 in. Outlets: (1) 1 in. MNPT. (1) 2 in. MNPT. (1) 3-1/8 in. FNPT. Overall dimensions: 4 ft. 5 in. L. x 2 ft. 7/8 in. W. x 8 ft. 6 in. H.

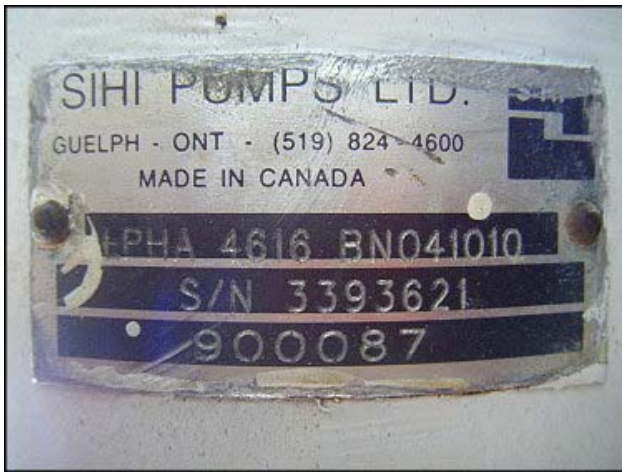
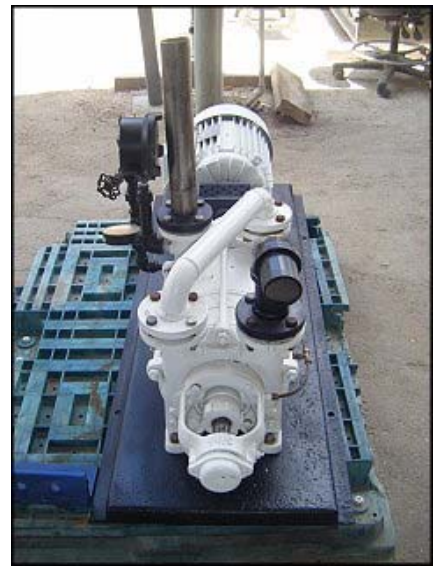


(1) APV Centrifugal Pump. Model no. W20/20. Serial no. P3588-96. U.S. Electrical motor: 2.0 hp, 3465 rpm, 208-230/460 V, 6.4/3.2 A, 60 Hz, 3 phase. Inlets: (1) 2 in. S-line. Outlets: (1) 2 in. S-line. Overall dimensions: 1 ft. 6-1/4 in. L. x 10-5/8 in. W. x 1 ft. 2-5/8 in. H.



(1) SIHI Pump. Model no. LPHA 4616 BN041010. Serial no. 3393621. Gould Century Electric Division motor: 10.0 hp, 1750 rpm, 230/460 V, 25/12.5 A, 60 Hz, 3 phase. Inlets/Outlets: (1) 2-1/4 in. FNPT port, (1) 3/4 in. MNPT port. (1) 1-3/4 flange dia. port with (4) 5/8 in. mounting holes. Center to center: adjacent = 2-3/4 in. Opposite = 3-7/8 in. Overall dimensions: 4 ft. 8 in. L. x 1 ft. 8-7/8 in. W. x 1 ft. 1-1/4 in. H.





Centrifugal Pump on base with accumulation tank. Model no. SMP2000. Serial no. 0691-1538. Size: 1X5 3-4-B. Liquid accumulation tank capacity: 20 gallons. Taylor actuator control valve, S/N: 2000VA12230-80174. Range 3 to 15 PSI. Baldor Electric motor. 3 hp, 3450 rpm, 208-230/460 V, 7.8-7.4/3.7 A, 60 Hz, 3 Phase. Inlets/Outlets: (1) 7/8 in. FNPT. (1) 1-3/8 in. FNPT. (1) 1-1/4 in. FNPT. (1) 2 in. FNPT. (1) 1 in. FNPT. Overall dimensions: 4 ft. 9 in. L. x 2 ft. 7 in. W. x 7 ft. 1-3/8 in. H.

